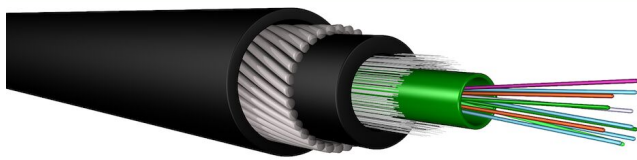


# I102: UC<sup>FIBRE</sup> I/O CT D SWA 09 LSHF E<sub>ca</sub>

Universal, CT, 4-24 fibres, glass yarns, sheath, SWA, Afumex® sheath



## GENERAL INFO

This high-performance fibre optic cable is engineered with a central loose tube filled with gel, delivering superior protection and consistent performance. Designed for versatility, it is UV-resistant and reinforced with steel wire armouring to ensure exceptional durability and long-term reliability. The cable is longitudinally water-blocked and rodent-resistant, with a tensile strength of 4.0 kN. Its halogen-free, flame-retardant outer jacket complies with IEC 60332-1-2 and Euro fire class Eca standards, making it safe for both indoor and outdoor installations. Whether directly buried in sand beds or installed in ducts, this cable is built to perform. Ideal for LAN, MAN, and WAN backbone infrastructures, it offers the flexibility and resilience required for mixed indoor/outdoor deployments.

The latest version of this data sheet is available for download: [ProductFamily238715](#)

## CERTIFICATIONS AND DESIGN STANDARDS



**ISO/IEC 11801**  
**EN 50173**  
**IEC 60794-1-1**  
**IEC 60794-1-21**  
**IEC 60794-1-22**  
**EN 50575**

Generic telecom cabling for customer premises  
 Information technology - Generic cabling systems  
 Generic Specification Fibre Optic Cables  
 Mechanical Test Methods  
 Environmental Test Procedures  
 Cables in construction works subject to reaction to fire

## APPLICATION PROPERTIES

Resistant to UV  
 Outdoor installation With rodent protection  
 Operation temperature (min) [°C]  
 Installation temperature (min) [°C]  
 Storage temperature (min) [°C]  
 Bending radius (rule)

UV stabilised  
 Yes  
 -40 and (max) [°C] 60  
 0 and (max) [°C] 50  
 -40 and (max) [°C] 60  
 During installation (loaded) = 20xOD, Permanent (unloaded) = 15xOD

## CABLE CONSTRUCTION

Type of tube	Central gel-filled green coloured loose tube with Ø2.8 mm with 2 to 12 fibres and with Ø3.5 mm with 16 to 24 fibres
Longitudinal water blocking cable	Yes
Rip cord	Yes
Material inner sheath	Low smoke zero halogen
Armouring/reinforcement	Steel, galvanised, Wire, round
Rip cord	Yes
Material outer sheath	1.4mm, Low smoke zero halogen
Cable shape	Round
Cable marking example	PRYSMIAN I/O CT D SWA 09 LSHF 'Fibre count' 'Fibre type' 'Fibre brand' 'Sap Code' '22' 'production order number' U-DQ(ZN)HWH 'Fibre count' 'Fibre family' 'Mode field diameter' /125 'Transmission Class' 'Meter mark' M

## IDENTIFICATION

Fibre colour code	1 Red	13 Yellow w/mark every 100mm
<i>in accordance with IEC 60794-2 and VDE 0888 <a href="#">read more</a></i>	2 Green	14 White w/mark every 100mm
	3 Blue	15 Grey w/mark every 100mm
	4 Yellow	16 Turquoise w/mark every 100mm
	5 White	17 Orange w/mark every 100mm
	6 Grey	18 Pink w/mark every 100mm
	7 Brown	19 Yellow w/mark every 50mm
	8 Violet	20 White w/mark every 50mm
	9 Turquoise	21 Grey w/mark every 50mm
	10 Black	22 Turquoise w/mark every 50mm
	11 Orange	23 Orange w/mark every 50mm
	12 Pink	24 Pink w/mark every 50mm
Colour inner/outer sheath	Black, RAL 9005	

## MECHANICAL PROPERTIES

Crush	IEC 60794-1-21 E3	2,000 N/10cm
Max. tensile strength during installation	IEC 60794-1-21 E1	4 kN
Impact test	IEC 60794-1-21 E4	15 N·m
Torsion test	IEC 60794-1-21 E7	3cycles±1turn 2m
Kink	IEC 60794-1-21 E10	The cables do not form a kink when a loop is drawn together to a diameter 40 times the cable nominal diameter.
Water penetration	IEC 60794-1-22 F5B	No water on free end
<i>* Longitudinal water blocking test method according to IEC 60794-1-22 and limited to the core of the cable under the inner sheath.</i>		

## FIRE PROPERTIES

Flame retardant according to IEC 60332-1-2	Yes
Reaction-to-fire class (acc. EN 13501-6)	Eca

## CABLE DETAILS

Number of fibres	Number of fibres per tube	Nominal outer diameter [mm]	Min. bending radius, fixed [mm]	Min. permitted bending radius, during cable laying [mm]	Cable weight [kg/km]
4	4	10.7	161	214	210
8	8	10.7	161	214	210
12	12	10.7	161	214	210
16	16	11.1	167	222	230
24	24	11.1	167	222	230

## ORDERING DETAILS

Product name	Number of fibres	Category (fibre)	Fibre datasheet	Colour outer sheath	DOP number	SAP code
UCFIBRE I/O CT D SWA 09 LSHF 4 SM2D	4	OS2	C03	Black	1001891	60040046
UCFIBRE I/O CT D SWA 09 LSHF 8 SM2D	8	OS2	C03	Black	1001891	60039906
UCFIBRE I/O CT D SWA 09 LSHF 12 SM2D	12	OS2	C03	Black	1001891	60040047
UCFIBRE I/O CT D SWA 09 LSHF 16 SM2D	16	OS2	C03	Black	1001891	60040048
UCFIBRE I/O CT D SWA 09 LSHF 24 SM2D	24	OS2	C03	Black	1001891	60039907
UCFIBRE I/O CT D SWA 09 LSHF 4 OM3B	4	OM3	C31	Black	1001891	60039903
UCFIBRE I/O CT D SWA 09 LSHF 8 OM3B	8	OM3	C31	Black	1001891	60039904
UCFIBRE I/O CT D SWA 09 LSHF 12 OM3B	12	OM3	C31	Black	1001891	60040044
UCFIBRE I/O CT D SWA 09 LSHF 16 OM3B	16	OM3	C31	Black	1001891	60040045
UCFIBRE I/O CT D SWA 09 LSHF 24 OM3B	24	OM3	C31	Black	1001891	60039905
UCFIBRE I/O CT D SWA 09 LSHF 4 OM4B	4	OM4	C32	Black	1001891	60040049
UCFIBRE I/O CT D SWA 09 LSHF 8 OM4B	8	OM4	C32	Black	1001891	60040050
UCFIBRE I/O CT D SWA 09 LSHF 12 OM4B	12	OM4	C32	Black	1001891	60040051
UCFIBRE I/O CT D SWA 09 LSHF 16 OM4B	16	OM4	C32	Black	1001891	60040052
UCFIBRE I/O CT D SWA 09 LSHF 24 OM4B	24	OM4	C32	Black	1001891	60040053

\*DoP Numbers are per product code and any DoP number proves CPR approval for the cable. DoP files can be downloaded from the website: [DoP](#)

© PRYSMIAN 2025, all rights reserved. All sizes and values without tolerances are reference values. Specifications are for product as supplied by PRYSMIAN: any modification or alteration afterwards of product may give different result. The information contained within this document must not be copied, reprinted or reproduced in any form, either wholly or in part, without the written consent of PRYSMIAN. The information is believed to be correct at the time of issue. PRYSMIAN reserves the right to amend this specification without prior notice. This specification is not contractually valid unless specifically authorized by PRYSMIAN.